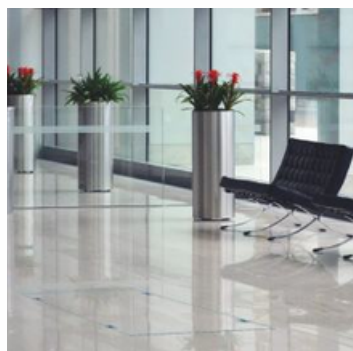


FLOOR ACCESS COVER IN ALUMINIUM

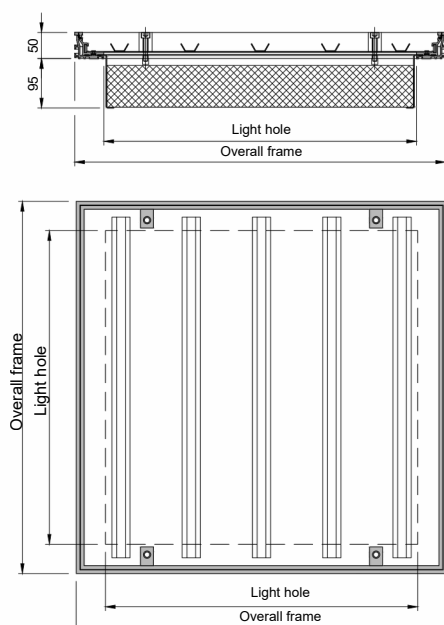
Series 5000 TH - thermal, removable



The Series 5000 floor access cover is made of aluminium. The depth of the tray is 37 mm and the installation height is only 50 mm.

The floor access cover is equipped with three special gaskets along the entire perimeter. The frame is embedded in concrete at floor level.

The tray can then be filled and inserted into the frame. The lid is fixed to the frame by 4 tightening screws, and can be removed with special lifting keys. Filling the tray is possible with tiles, concrete, resin, granite, self-locking, wood, hard floors or other materials.



ITEM	Overall frame size [ca. mm]	Light hole [ca. mm]	Empty weight [ca. kg]	M - S
PRE-TH-300300AL50	412 x 412	300 x 300	7 kg	S
PRE-TH-400400AL50	512 x 512	400 x 400	10 kg	S
PRE-TH-500500AL50	612 x 612	500 x 500	13 kg	S
PRE-TH-600600AL50	712 x 712	600 x 600	17 kg	S
PRE-TH-700700AL50	812 x 812	700 x 700	22 kg	S
PRE-TH-800800AL50	912 x 912	800 x 800	26 kg	S
PRE-TH-900900AL50	1012 x 1012	900 x 900	32 kg	S

M Available in stock while supplies last

S Customized production

APPLICATION

For indoor and outdoor floor ducts.
High quality is required.

MATERIAL

Frame and tray in Aluminium.

INSTALLATION AND OPENING

The installation shall be implemented in a professional manner in accordance with our installation instructions. A lifting key and installation instructions are included with every FF floor access cover.

CUSTOMIZED SOLUTIONS

Customized production upon customer enquiry.

PARTICULAR ADVANTAGES

- With 80 mm thick polyurethane plate
- With 3 special gaskets
- Almost invisible when installed
- Can be easily opened thanks to the conical construction design
- Short lead time production
- Own production

LOAD



EASYLIFTER

We recommend to use the EasyLifter. More informations: page 62